

:KDW ,V ,3('6"

7KH ,QWHJUDWHG 3RVVVFHRQGD
6\ VWHP ,3('6 LV D V\ VWHP RI VXUY
WKDW FROOHFWV GDWD IURP DERXW
SURYLGH SRVWVFHRQGD\ HGXFDWL
6WDWHV ,3('6 FROOHFWV LQVWL
VWXGHQW HQUROOPHQW JUDGX
FKDUJHV SURJUDP FRPSOHWLRQV
ILQDQFHV

7KXVH GDWD DUH XVHG DW WKH IHGH
SROLF\ DQDO\VLV DQG GHYHORSHPH
OHYHO IRU EHQFKPDUNLQJ DQG SH
VWXGHQWV DQG SDUHQWV WKURXJK
KWWS FROOHJH QDYLDJDRU HG JRY
LQ WKH FROOHJH VHDFK SURFHVV
DERXW ,3('6 VHH KWWS QFHV HG J

:KDW ,V WKH 3XUSRVH RI 7KLV 5

7KH 'DWD)HHGEDFN 5HSRUW LV LQ
LQVWLWXWLRQV D FRQWH[W IRU H
VXEPLWWHG

:KDW ,V LQ 7KLV 5HSRUW"

7KH ILJXUHV LQ WKLV UHSRUW SU
LQGLFDWRUV IRU \RXU LQVWLWXWLRQ
RI VLPLODU LQVWLWXWLRQV 7KH ILJ
FROOHFWHG GXULQJ WKH ,3('6
DQG DUH WKH PRVW UHFHQW GDWD
FRYHU RI WKLV UHSRUW OLVWV WKH
JURXS RI LQVWLWXWLRQV DQG WKH
VHOHFWLRQ 7KH 0HWKRGRORJLFDO 1
UHSRUW GHVFULEH DGGLWLRQDO LQ
LQGLFDWRUV DQG WKH SUH VHOHFW

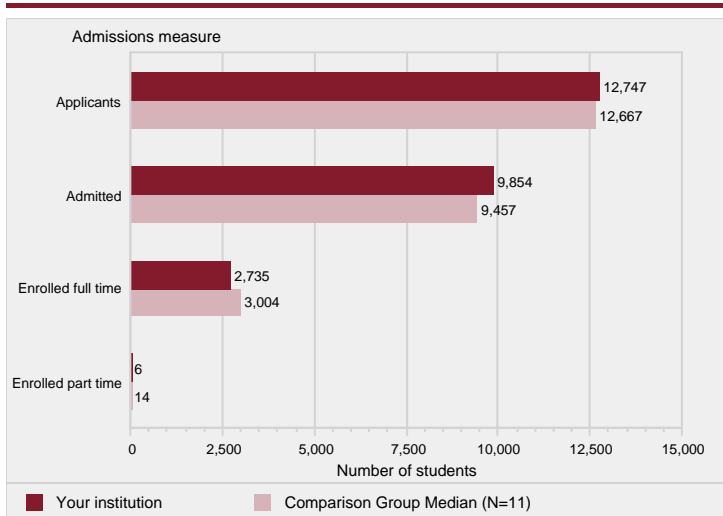
:KHUH &DQ , 'R 0RUH ZLWK ,3('6

(DFK LQVWLWXWLRQ FDQ DFFHVV SUH
)HHGEDFN 5HSRUWV IURP DQG
UHSRUW E\ XVLQJ D GLIIHUHQW
DQG ,3('6 YDULDEOHV RI LWV FKRRV
DUFKLYHG UHSRUWV RU FXVWRPL
)HHGEDFN 5HSRUW SOHDVH YLV
KWWS QFHV HG JRY LSHGV +RP

&203\$5,621 *5283

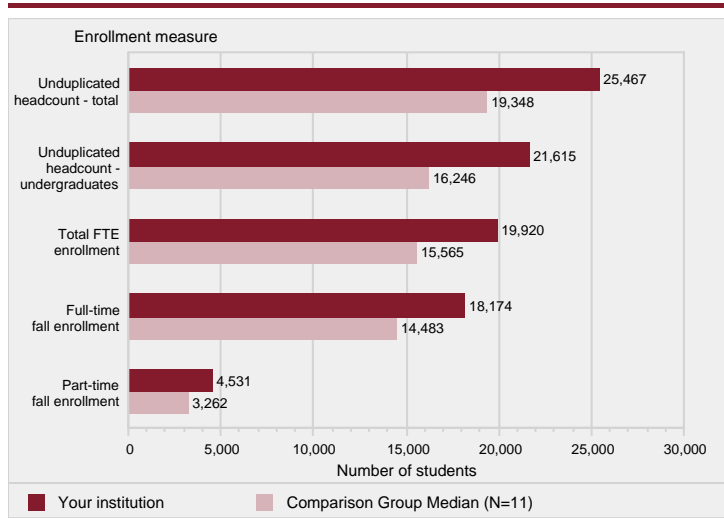
&RPSDULVRQ JURXS GDWD DUH LQFOXGHG WR SURYLGH D FRQWH[W IRU LQWHUSUHWLQ
FRPSDULVRQ JURXS IRU WKLV UHSRUW E\ -XO\ 1&(6 VHOHFWHG D FRPSDULVRQ J
WKH FRPSDULVRQ JURXS DSSHUV EHZ 7KH &XVWRPL]H 'DWD)HHGEDFN 5HSRUW IX
KWS QFHV HG JRY LSHGV GDWDFHQWHU

Figure 1. Number of first-time undergraduate students who applied, were admitted, and enrolled full and part time: Fall 2017



127(\$GPLVLRQV GDWD DUH SUHVHQWHG RQO\ IRU LQVWLWXWLRQV WKDW GR QRW KDYL DQ RSHQ DGPLVLRQ SROLF\ DQG DSSO\ WR ILUVW WLPH GHJUHH FHUWLILFDWH VHHNLQJ XQGHUDJGDGDWH VWXGHQWV RQO\)RU GHWDLOV VHH WKH 0HWKRGRORJLFDQ 1RWHV 1 LV WKH QXPEHU RI LQVWLWXWLRQV LQ LV :@p uDW ZDGDGDW`0A`x... d@pcgR`_pd`a`0A`pAp`pA` `0A` LV :@p uDW ZDGDGDW`0A`x... dJX p- WKD@TG`DGX Zd 1 V LVV6u`u(JLFFV VHuD d0 `...puD@p P0P`P2,, A` `d0 `e7`@0A0 d`ae`p0 p,A V `pAPdJX8 Z IRU LQVWLWXW`g_id ad@LF`d' U @A e d0p d@ j...A1/dUj&uñ,-AD p eD0@iPLVLRQV GDWD DUH SUHVHQWHG RQ DGPLVLRQ SROLF\ DQG DSSO\ WR ILUVW WLPH GHJUHH FHUWLILFDWH VHHNLQJ XQGHUDJGDGDWH VWXGHQWV RQO\)RU GHWDLOV VHH WKH 0HWKRGRORJLFDQ 1RWHV 1 LV WKH QX L DGP0L`H XWLRQRCDQ0 XIÉR`0. TMaT` `pAPdJXHD`pD` eAp0HDm Dpx... T @E`-D`E`T`0p`- Dpx... 6p pApUG P` °@` e p e e uDW WUHV GHJUHH FHUWLILFDWH VHHNLQJ X

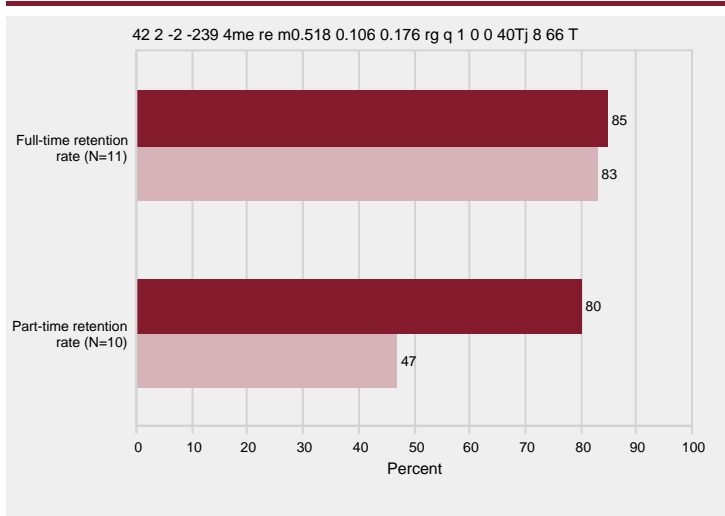
Figure 4. Unduplicated 12-month headcount of all students and of undergraduate students (2016-17), total FTE enrollment (2016-17), and full- and part-time fall enrollment (Fall 2017)



127()RU GHWDLOV RQ FDOFXODWLQJ IXOO WLPH HTXLYDOHQW)7(HQUROOPHQW VHH &DOFXODWLQJ)7(LQ WKH 0HWKRGRORJLFDO 1RWHV 7RWDO KHDGFRXQW)7(DQG IXOO DQG SDUW WLPH IDOO HQUROOPHQW LQFOXGH ERWK XQGHUJUDGXDWLQJ DQG SRVWEDFFDOH VÖi@i@ ð Gu' Ð•p`Pðð @ p00DOO HQURO)RU DQ±WL

X Q G H miiL Qy piVxänä y \ S † ‡@X W Ay p €6 L ^L5 J

Figure 12. Retention rates of first-time bachelor's degree seeking students, by attendance level: Fall 2016 cohort



127(5HWHQWLRQ UDWHV DUH PHDVXUHG IURP WKH IDOO RI ILUVW HQUROOPHQW WR WKH IROORZLQJ IDOO \$FDGHP LF UHSRUWLQJ LQVWLWXWLRQV UHSRUW UHWHQWLRQ GDWD DV RI WKH LQVWLWXWLRQ V RIILFLDO IDOO UHSRUWLQJ GDWH RU DV RI 2FWREHU 3URJUDP UHSRUWHUV GHWHUPLQH WKH FRKRUW ZLWK HQUROOPHQW DQ\ WLPH EHWZHHQ \$XJXVW 2FWREHU DQG UHWHQWLRQ EDVHG RQ \$XJXVW)RXU\ HDU LQVWLWXWLRQV UHSRUW UHWHQWLRQ UDWHV IRU VWXGHQWV VHHNLQJ D EDFKHORU V GHJUHH)RU PRUH GHWDLOV VHH WKH 0HWKRGRORJLFDQ 1RWHV 1 LV WKH QXPEHU RI LQVWLWXWLRQV LQ WKH FRPSDULVRQ JURXS

6285&(8 6 'HSDUWPHQW RI LQVWLWXWLRQ 1DWLRQDO 8HWHQWLRQ 6HFWURQ 6YDOLYWLWLFV WKH FRPSDULVRQ 8HWHQWLRQ GDWD 2016

VWX1RWHWKRGRHGQW €V R• U PRUH GU s` €0

VWX1RWHWKRGRHGQW €V R• U PRUH GU s` €0

VWX1RWHWKRGRHGQW €V R• U PRUH GU s` €0

Figure 15. Graduation rates of full-time, first-time degree/certificate-seeking undergraduates within 150% of normal time to program completion, by financial aid recipients: 2011 cohort

Figure 17. Award and enrollment rates of first-time, full-time, degree/certificate-seeking undergraduates after 8 years of entry, by Pell status, 2009-10 cohort

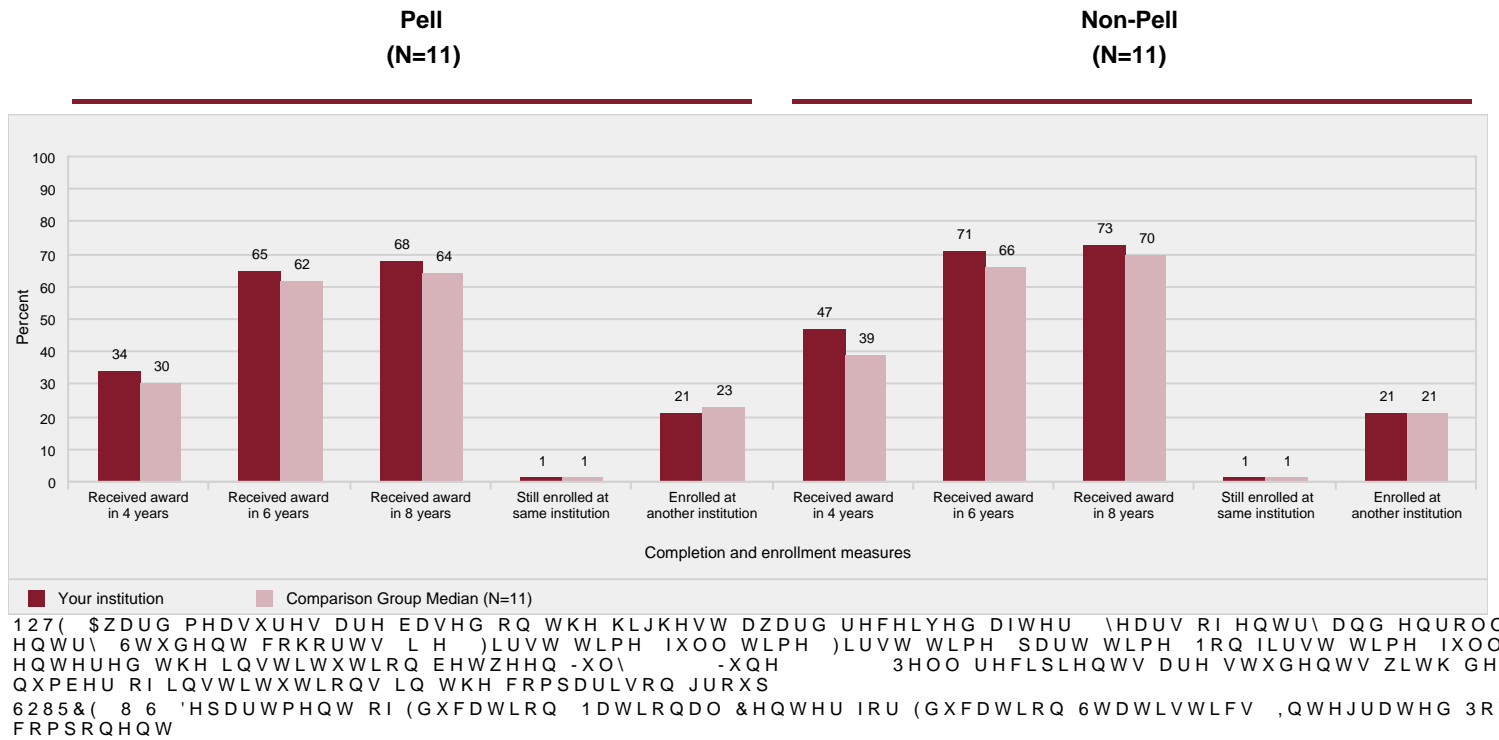


Figure 18. Award and enrollment rates of first-time, part-time, degree/certificate-seeking undergraduates after 8 years of entry, by Pell status, 2009-10 cohort

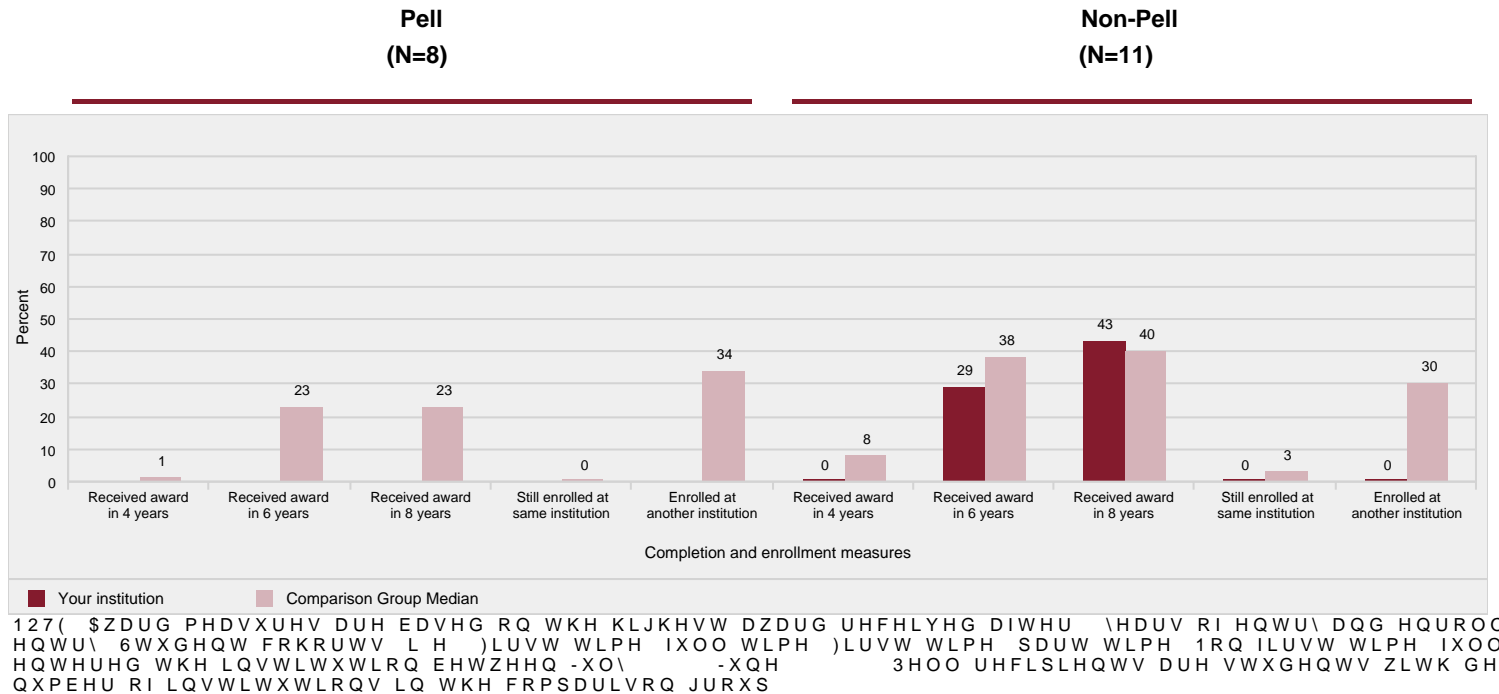
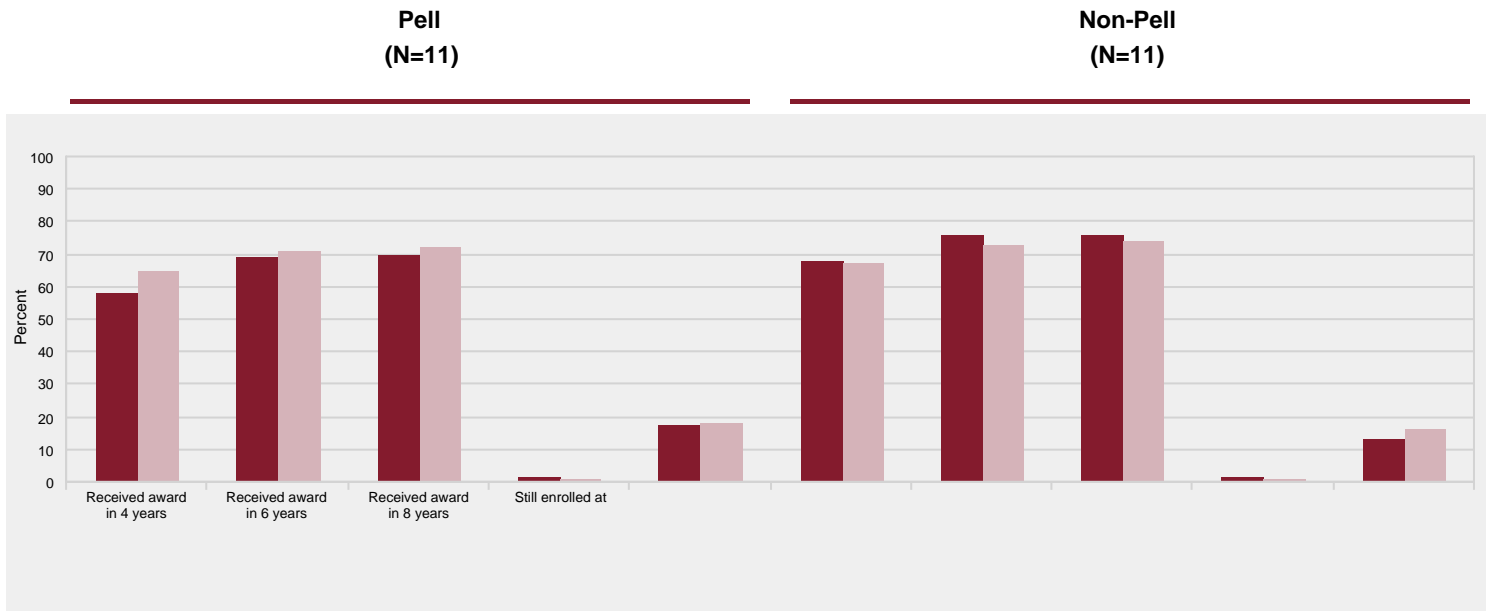
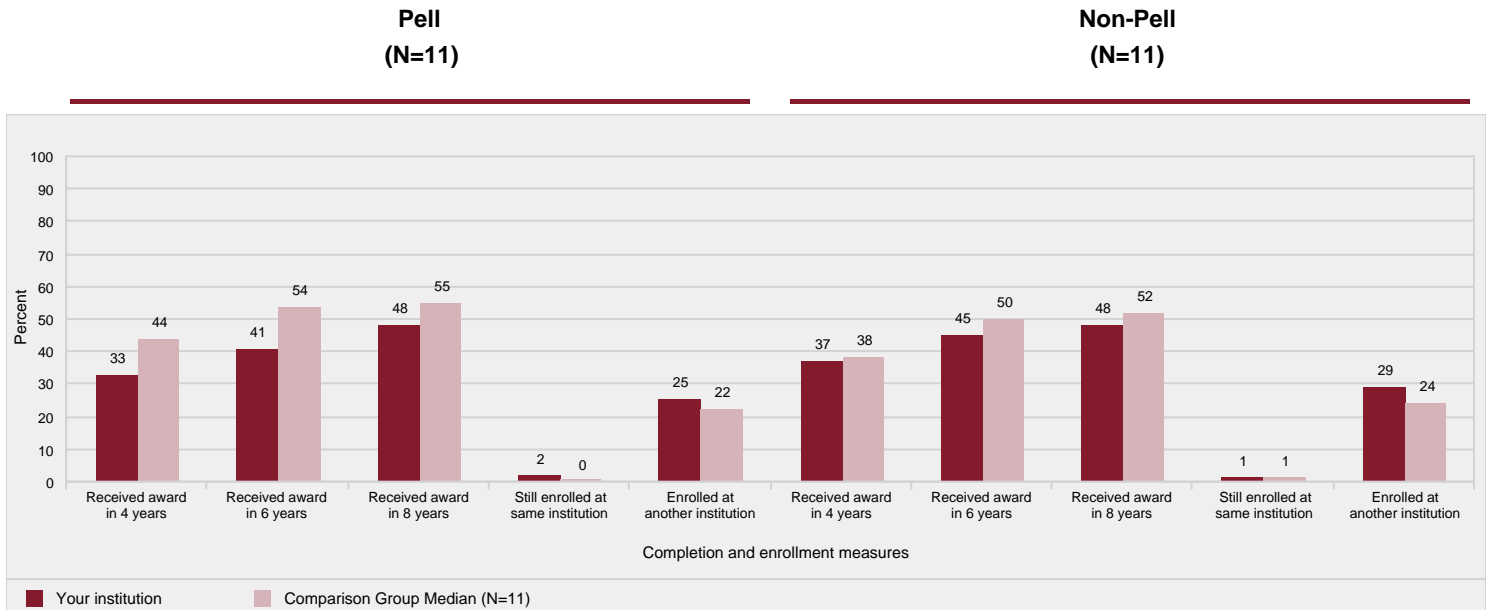


Figure 19. Award and enrollment rates of non-first-time, full-time, degree/certificate-seeking undergraduates after 8 years of entry, by Pell status, 2009-10 cohort



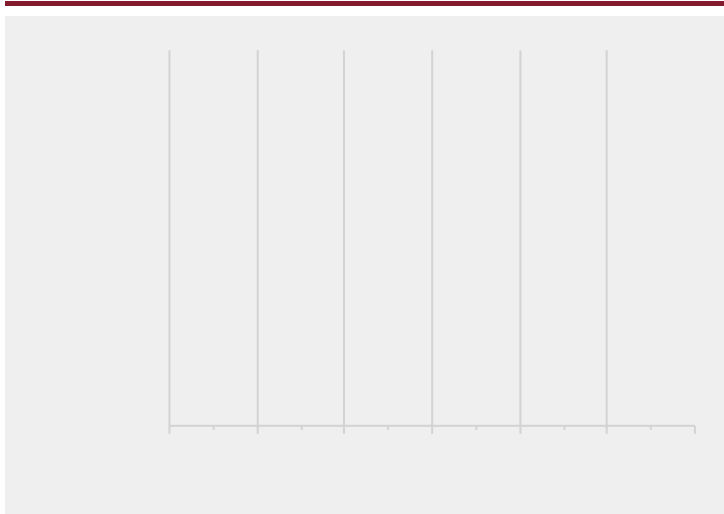
127(\$ZDUG PHDVXUHV DUH EDVHG RQ WKH KLJKHVW DZDUG UHFHLYHG DIWHU \HDUV RI HQWU\ DQG HQUROOPHQW
 HQWU\ 6WXGHQW FRKRUV L H)LUVW WLPH IXOO WLPH)LUVW WLPH SDUW WLPH 1RQ ILUVW WLPH IXOO WLPH
 HQWHUHG WKH LQVWLWXWLRQ EHWZHHQ -XO\ -XQH 3HOO UHFSLHQWV DUH VWXGHQWV ZLWK GHPRQVW
 QXPEHU RI LQVWLWXWLRQV LQ WKH FRPSDULVRQ JURXS
 6285&(8 6 'HSDUWPHQW RI (GXFWRQ 1DWRQDO &HQWHU IRU (GXFWRQ 6DWRVWLFV ,QWHJUDWHG 3RVVHF
 FRPSRQHQW

Figure 20. Award and enrollment rates of non-first-time, part-time, degree/certificate-seeking undergraduates after 8 years of entry, by Pell status, 2009-10 cohort



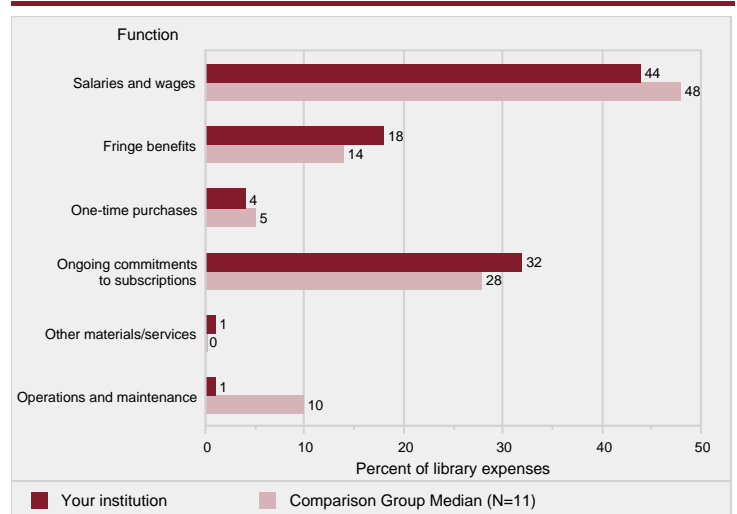
127(\$ZDUG PHDVXUHV DUH EDVHG RQ WKH KLJKHVW DZDUG UHFHLYHG DIWHU \HDUV RI HQWU\ DQG HQUROOPHQW
 HQWU\ 6WXGHQW FRKRUV L H)LUVW WLPH IXOO WLPH)LUVW WLPH SDUW WLPH 1RQ ILUVW WLPH IXOO WLPH
 HQWHUHG WKH LQVWLWXWLRQ EHWZHHQ -XO\ -XQH 3HOO UHFSLHQWV DUH VWXGHQWV ZLWK GHPRQVW

Figure 25. Percent distribution of library collection, by material type: Fiscal Year 2017



127(1 LV WKH QXPEHU RI LQVWLWXWLRQV LQ WKH FRPSDULVRQ WKH QXPEHU RI LQVWLWXWLRQV LQ WKH FRPSDULVRQ
 6285&(8 6 'HSDUWPHQW RI (GXFDWLRQ 1DWLRQDO & HQWUHQV (IRU G'XFDWLRQ WDWL (GXFDWLRQ 1DWLRQDO & HQWH
 ,QWHJUDWHG 3RVVHFRQGDU\ (GXFDWLRQ 'DWD 6\ VWHP, QWHJUDWHG 3RVVHFRQGDU\ (GXFDWLRQ 'DWD 6\ VWHP ,3
 /LEUDULHV FRPSRQHQW

Figure 26. Percent distribution of library expenses, by function: Fiscal Year 2017



127(1 LV WKH QXPEHU RI LQVWLWXWLRQV LQ WKH FRPSDULVRQ WKH QXPEHU RI LQVWLWXWLRQV LQ WKH FRPSDULVRQ
 6285&(8 6 'HSDUWPHQW RI (GXFDWLRQ 1DWLRQDO & HQWUHQV (IRU G'XFDWLRQ WDWL (GXFDWLRQ 1DWLRQDO & HQWH
 ,QWHJUDWHG 3RVVHFRQGDU\ (GXFDWLRQ 'DWD 6\ VWHP, QWHJUDWHG 3RVVHFRQGDU\ (GXFDWLRQ 'DWD 6\ VWHP ,3
 /LEUDULHV FRPSRQHQW

-7RZVRQ 8QLYHUVLW\-

0(7+2'2/2*,&\$ / 127(6

2YHUYLHZ

7KLV UHSRUW LV EDVHG RQ GDWD VXSSOLHG E\ LQVWLWXWLRQV WR ,3('6 GXULQJ
VXUYH\V ,3('6)LUVW /RRN UHSRUWV DW KWWS QFHV SHUR YIRGHSXEFH DLOFIR UPHDWS
LQVWLWXWLRQDO UHVSQRVHV

8VH RI 0HGLDQ 9DOXHV IRU &RPSDULVRQ *URXS

7KLV UHSRUW FRPSDUHV \RXU LQVWLWXWLRQ\ GDWD WR WKH PHGLDQ YDOXH IRU WKH
RQH VWDWLVWLF LV SUHVHQW LQ D ILJXUH WKH PHGLDQ YDOXH DUH GHWHUPLQHG
FRPSDULVRQ JURXS ZLWK IHZHU WKDQ WKUHH YDOXH :KHUH SHUFHQWDJH GLVWU
DFFHV DOO WKH GDWD XVHG WR FUHDWH WKH ILJXUH LQFOXGHG LQ WKLV UHSRUW
KWWS QFHV HG JRY LSHG

0LVVLQJ 6WDWLVWLFV

,I D VWDWLVWLF LV QRW UHSRUWHG IRU \RXU LQVWLWXWLRQ WKH RPLVLRQ LQGLFD
FROOHFWHG 1RW DOO QRWHV PD\ EH DSSOLFDEOH WR \RXU UHSRUW

8VH RI ,PSXWHG 'DWD

\$OO ,3('6 GDWD DUH VXEMHFW WR LPSXWDWLRQ IRU WRWDO LQVWLWXWLRQDO DQG
SUHSDUH \RXU UHSRUW

'DWD &RQILGHQWLDOLW\

,3('6 GDWD DUH QRW FROOHFWHG XQGHU D SOHGJH RI FRQILGHQWLDOLW\

'LVDJJUHJDWLRQ RI 'DWD E\ 5DFH (WKQLFLW\

:KHQ DSSOLFDEOH VRPH VWDWLVWLFV DUH GLVDJJUHJDWHG E\ UDFH HWKQLFLW\ 'D
2IILFH RI 0DQDJHPHQW DQG %XGJHW FWHJRULHV 'HWDLOHG LQIRUPDWL
KWWSV QFHV HG JRY LSHG 6HFWRQ 5HVRXUFHV

&RKRUW 'HWHUPLQDWLRQ IRU 5HSRUWLQJ 6WXGHQW)LQDQFLDO \$LG *UDGXDWLRQ

6WXGHQW FRKRUWV IRU UHSRUWLQJ 6WXGHQW)LQDQFLDO \$LG DQG *UDGXDWLRQ
LQVWLWXWLRQV WKDW UHSRUW EDVHG RQ DQ DFDGHPLF \HDU WKRWH RSHUDWLQJ RQ
IDOO WHUP GDWD 6WXGHQW FRXQWV DQG FRKRUWV IRU SURJUDP UHSRUWHUV WK
XQGXSOLFDFWHG FRXQWV RI VWXGHQWV HQUROOHG GXULQJ D IXOO PRQWK SHULR
6WXGHQW FRKRUWV IRU UHSRUWLQJ 2XWFRPH 0HDVXUHV DUH EDVHG RQ D IXOO \HDU F

'(6&5,37,21 2) 67\$7,67,&6 86(' ,1 7+(),*85(6

\$GPLVVLRQV RQO\ IRU QRQ RSHQ DGPLVVLRQV VFKRROV

Œâ {î•â [}•âæ}âV^•âÛ& [!^Öææ

\$GPLVVLRQV DQG WHVW VFRUH GDWD DUH SUHVHQWHG RQO\ IRU LQVWLWXWLRQV
GHJUHH FHUWLILFDWH VHNLQJ XQGHUJUDGDWH VWXGHQWV RQO\ \$\$SOLFDFQWV LQFC
IRU DGPLVVLRQ DQG ZKR ZHUH QRWLILHG RI RQH RI WKH IROORZLQJ DFWLRQV DG
ZLWKGUDZQ E\ DSSOLFDFQW RU LQVWLWXWLRQ \$GPLWWHG DSSOLFDFQWV DGPLV
DGPLVVLRQ (DUO\ GHFLVLRQ HDUO\ DFWLRQ DQG VWXGHQWV ZKR EHJDQ VWXGLHV G
FXVWRPLJHG 'DWD)HHGEDFN 5HSRUWV WHVW VFRUHV DUH SUHVHQWHG RQO\ LI VFRUH

6WXGHQW (QUROOPHQW

øVò!ò};[||{^}c

7KH IXOO WLPH HTXLYDOHQW)7(HQUROOPHQW XVHG LQ WKLV UHSRUW LV WKH VXP
HQUROOPHQW DV FDOFXODWHG IURP RU UHSRUWHG RQ WKH PRQWK (QUROOPHQW
PRQWK LQVWUXFWLRQDO DFWLYLW\ FUHGLW DQG RU FRQWDFW KRXUV 6HH ³&D
*ORVVDU\ DW KWWSV VXUYH\V QFHV HG JRY LSHGV 9LV*ORVVDU\ \$OO DVS[

V[cæ|!ò}c^!â} *!W}â^! *!æâ ~æc^!Ùc ~â^}c•

U`c&[{^A^T^æ•~/\^•AÖææ

\$OWHUQDWLYH PHDVXUHV RI VWXGHQW VXFHV V DUH UHSRUWHG E\ GHJUHH JUDQWV
VHHNLQJ XQGHUJUDGXDWH VWXGHQW JURXS)XOO WLPH ILUVW WLPH)7)7 3DUW
WLPH QRQ ILUVW WLPH 371)7 \$GGLWLRQDO\ HDFK RI WKH IRXU FRKRUWV FROOH
UHFLSLHQWV 7KHVH PHDVXUHV SURYLGH WKH \HDU \HDU DQG \HDU DZDUG UD
FDOFXODWHV DZDUG UDWHV E\ GLYLGLQJ D FRKRUW\ V RU VXEFKRUW\ V DGMXVWHG
VWDWXV SRLQWV

7KH LQLWLDO FRKRUW FDQ EH UHYLVHG DQG WDNH DOORZDEOH H[FOXVLRQV UHVXOW
LQLWLDO FRKRUW WKH IROORZLQJ VWXGHQWV ZKR GLHG RU ZHUH WRWDO\ DQG
IRUFHV RU ZHUH FDOOHG XS WR DFWLYH GXW\ WKRVH ZKR OHIW WR VHUYH ZLWK
&RUSV DQG WKRVH ZKR OHIW WR VHUYH RQ DQ RIILFH FKXUFK PLVVLRQ

7KH KLJKHVW DZDUG DQG WKH W\SH RI DZDUG L H FHUWLILFDWH \$VVRFLDWH\ V RU
QRW HDUQ DQ XQGHUJUDGXDWH DZDUG DIWHU \HDUV RI HQWU\ WKH HQUROOPHQ
VXEVTXHQW\ WUDQVIHUHG RXW RI WKH LQVWLWXWLRQ 8QOLNH WKH *UDGXDWLR
HQWHULQJ -XO\ RI RQH \HDU WR -XQH WR WKH QH[W DQG RQ WKHLU WUDQVIHU R
VXEVWDQWLDO WUDQVIHU SUHSDUDWLRQ

)LQDQFH

Ô[!^!Ü^ç^}~^•

&RUH UHYHQXHV IRU SXEOLF LQVWLWXWLRQV UHSRUWLQJ XQGHU *\$6% VWDQGDUG
DSSURSULDWLRQV DQG RSHUDWLQJ DQG QRQRSHUDWLQJ JUDQWV FRWUDFWV SULY
JLIWV DQG FRWULEXWLRQV IURP DILOLDWHG HQWLWLHV VDOHV DQG VHUYLFH
QRQRSHUDWLQJ VRXUFHV DQG RWKHU UHYHQXHV DQG DGGLWLRQV FDSLWDO DSSURS
FRUH UHYHQXHV LQFOXGH IHGHUDO DSSURSULDWLRQV VDOHV DQG VHUYLFHV RI HG
RWKHU UHYHQXHV DQG DGGLWLRQV

&RUH UHYHQXHV IRU SULYDWH QRW IRU SURILW LQVWLWXWLRQV DQG D VPDOO QXPE
DQG IHV JRYHUQPHQW IHGHUDO VWDWH DQG ORFDO DSSURSULDWLRQV DQG JUD
IURP DILOLDWHG HQWLWLHV LQYHVWPHQW UHWXUQ VDOHV DQG VHUYLFHV RI HG
UHYHQXHV PLQXV WKH VXP RI FRUH DQG QRQFRUH FDWHJRULHV RQ WKH)LQDQFH FR
VWDWH DQG ORFDO DSSURSULDWLRQV VDOHV DQG VHUYLFHV RI HGXFWDWLRQDO DF

&RUH UHYHQXHV IRU SULYDWH IRU SURILW LQVWLWXWLRQV UHSRUWLQJ XQGHU)\$6
ORFDO DSSURSULDWLRQV DQG JUDQWV FRWUDFWV SULYDWH JUDQWV FRWUDFWV
VRXUFHV D JHQHUDWHG FDWHJRUL\ RI WRWDO UHYHQXHV PLQXV WKH VXP RI FRUH D
UHYHQXHV LQFOXGH JRYHUQPHQW IHGHUDO VWDWH DQG ORFDO DSSURSULDWLR

\$W GHJUHH JUDQWLQJ LQVWLWXWLRQV FRUH UHYHQXHV H[FOXGH UHYHQXHV IURP DX
LQGHSHQGHQW RSHUDWLRQV 1RQ GHJUHH JUDQWLQJ LQVWLWXWLRQV GR QR UHSRU
PD\ LQFOXGH WKHVH DPRXQWV LQ WKH FRUH UHYHQXHV IURP RWKHU VRXUFHV

Ô[!^!Öç]~^•

&RUH H[SHQVHV LQFOXGH H[SHQVHV IRU LQVWUXFWLRQ UHVHDFK SXEOLF VHUYLF
DLG VFKRODUVKLSV DQG IHOORZVKLSV QHW RI GLVFRXQWV DQG DOORZDQFHV DQG
PLQXV WKH VXP RI FRUH DQG QRQFRUH IXQFWLRQV RQ WKH)LQDQFH FRPSRQHQW (L
DQG LQWHUHVW DUH DOORFDWHG WR HDFK RI WKH RWKHU IXQFWLRQV &RUH H[SH
HQWHUSULVHV H J ERRNVWRUHV DQG GRUPLWRULHV KRVSLWDOV DQG LQGHSH
H[SHQVHV IRU DX[LOLDU\ HQWHUSULVHV LQ D VHSUDWH FDWHJRUL\ DQG WKXV PD\
³2WKHU FRUH H[SHQVHV LV WKH VXP RI JUDQW DLG VFKRODUVKLSV DQG IHOORZVK

Ò}â[, {^}çE•~^•

(QGRZPHQW DVVHWV IRU SXEOLF LQVWLWXWLRQV XQGHU *\$6% VWDQGDUGV DQG SUL
LQYHVWPHQWV RI HQGRZPHQW IXQGV WHUP HQGRZPHQW IXQGV DQG IXQGV IXQFWLR
DQG RWKHU DILOLDWHG RUJDQL]DWLRQV 3ULYDWH IRU SURILW LQVWLWXWLRQV XQ

Ùæ|æ|ä^•|æ}ä|Yæ*^•

6DODULHV DQG ZDJHV IRU SXEOLF LQVWLWXWLRQV XQGHU *\$6% VWDQGDUGV DQG SUL
LQFOXGH DPRXQWV SDLG DV FRPSHQVDWLRQ IRU VHU\LFHV WR DOO HPSOR\HHV UHJD
RI DQ LQGLYLGXDO RYHU DQG DERYH WKDW UHFHLYHG LQ WKH IRUP RI D VDODU\ RU Z

6WDII

øVØ|Ùæ-

7KH IXOO WLPH HTXLYDOHQW)7(E\ RFFXSDWLRQDO FDWHJRU\ LV FDOFXODWHG E\ V
WKH WRWDO QXPEHU RI SDUW WLPH VWDII *UDGXDWH DVVLVWDQWV DUH QRW LQFOX

Ò~æc^ä|Q}•c|~&cä[}æ|P[}ËT^ä&æ|Ùæ-ÄÙæ|æ|ä^•

,QVWLWXWLRQV UHSRUWHG WKH QXPEHU RI IXOO WLPH QRQPHGLFDO LQVWUXFWLRQDO
RI PRQWKV ZRUNHG DQG PRQWKV 6DODU\ RXWOD\V IRU VWDII ZKRZRU
ZRUN E\ PXOWLSO\LQJ WKH RXWOD\V UHSRUWHG IRU PRQWKV E\ WKH RXWOD\V
PRQWKV E\ 7KH 7€@€@p€p 4 P